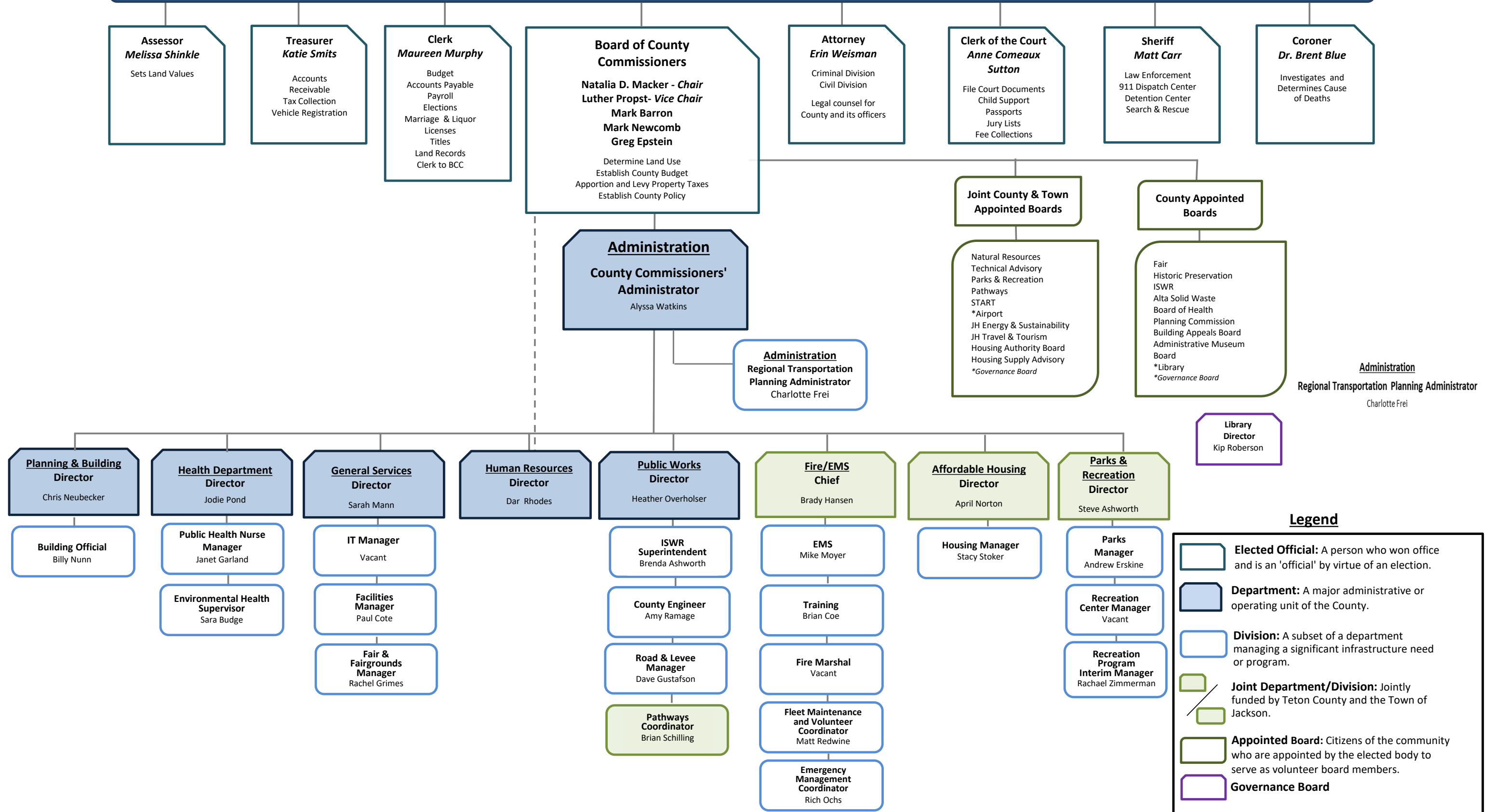









# Teton County Organizational Chart



## Legend

-  **Elected Official:** A person who won office and is an 'official' by virtue of an election.
-  **Department:** A major administrative or operating unit of the County.
-  **Division:** A subset of a department managing a significant infrastructure need or program.
-   **Joint Department/Division:** Jointly funded by Teton County and the Town of Jackson.
-  **Appointed Board:** Citizens of the community who are appointed by the elected body to serve as volunteer board members.
-  **Governance Board**